

# SLATER® PLASTIC BOXES

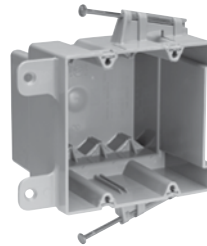
Switch & Outlet Boxes With Captive Mounting Nails on Each End with Quick/Click®



S118R



S122R

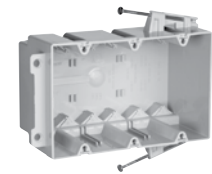


S235RAC

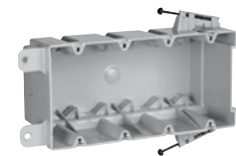


S235RACMH

CATALOG NUMBER	CU. IN. VOL.	DESCRIPTION	DIMENSIONS			WIRE FILL (AWG)	QTY. PER CARTON
			L	W	D		
<b>SWITCH &amp; OUTLET BOXES WITH QUICK/CLICK®</b>							
S118R	18.0	Single gang. 2 Quick/Entries® each end.	3¾	2¼	2 <sup>23</sup> / <sub>32</sub>	9 No. 14 8 No. 12 7 No. 10	100
S235RAC	35.0	Two gang. 4 Auto/Clamps® each end.	3 <sup>31</sup> / <sub>32</sub>	3 <sup>31</sup> / <sub>32</sub>	3 <sup>3</sup> / <sub>8</sub>	17 No. 14 15 No. 12 14 No. 10	50
S235RACMH	35.0	Two gang. 4 Auto/Clamps® each end. 3" depth for manufactured housing walls.	3¾	4 <sup>1</sup> / <sub>16</sub>	3	17 No. 14 15 No. 12 14 No. 10	100
S354RAC	54.0	Three gang. 6 Auto/Clamps® each end.	3 <sup>31</sup> / <sub>32</sub>	5 <sup>25</sup> / <sub>32</sub>	3	27 No. 14 24 No. 12 21 No. 10	50
S468RAC	68.0	Four gang. Rear stabilizing bar virtually eliminates inward movement. 6 Auto/Clamps® each end.	3 <sup>13</sup> / <sub>16</sub>	7 <sup>13</sup> / <sub>16</sub>	3	34 No. 14 30 No. 12 27 No. 10	25
<b>DEEP SWITCH &amp; OUTLET BOXES WITH QUICK/CLICK®</b>							
S122R	22.5	Single gang deep. 2 Quick/Entries® each end. Extra deep for dimmers, GFCIs and thermostats, yet suitable for 2 x 4 construction.	3¾	2¼	3 <sup>3</sup> / <sub>8</sub>	11 No. 14 10 No. 12 9 No. 10	100



S354RAC

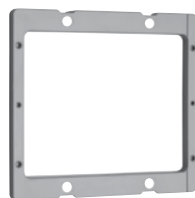


S468RAC

All boxes are UL Listed.  
UL Classified for 2 Hour Fire Resistance. (Does not apply to S468RAC.)



EXT1

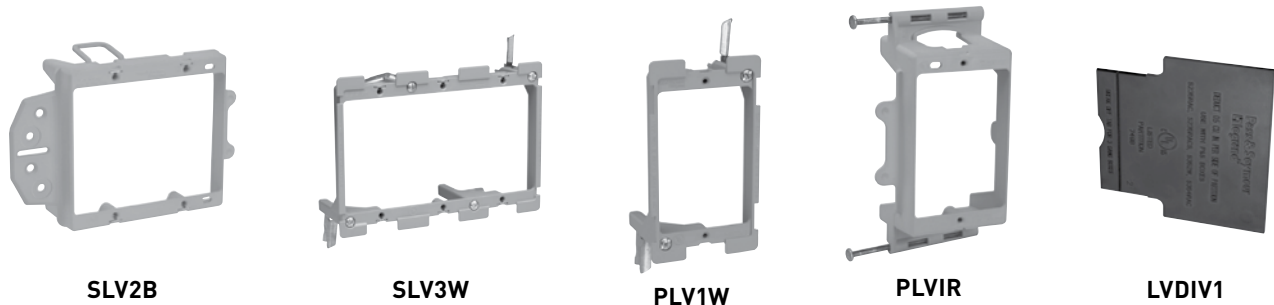


EXT2

CATALOG NUMBER	CU. IN. VOL.	DESCRIPTION	QTY. PER CARTON
<b>WALL BOX EXTENSION RINGS</b>			
EXT1	1.0	Single gang. ¼" thick. Stackable.	10
EXT2	2.0	Two gang. ¼" thick. Stackable.	10

# SLATER® PLASTIC BOXES

## Low-Voltage Brackets

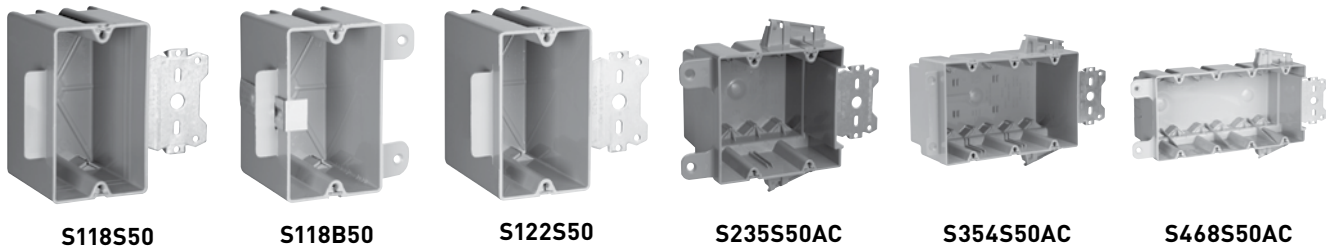


CATALOG NUMBER	CU. IN. VOL.	DESCRIPTION	DIMENSIONS			WIRE FILL (AWG)	QTY. PER CARTON
			L	W	D		
<b>LOW-VOLTAGE BRACKETS WITH QUICK/CLICK® for class 2 low-voltage applications</b>							
SDV2B	22.5	Two gang. For dual-voltage. Face mount box and bracket for new construction.	3¾	4	3¾	11 No. 14 10 No. 12 9 No. 10	12
SLV1R	-	Single gang. Nail on for new construction.	3¾	2¼	-	-	12
SLV1S	-	Single gang. Nail on for new construction.	3¾	2¼	-	-	12
SLV1B	-	Single gang. Face mount bracket for new construction.	3¾	2¼	-	-	12
SLV2B	-	Two gang. Face mount bracket for new construction.	3¾	4	-	-	12
SLV1W	-	Single gang. Swing bracket mount for old work.	3¾	2¼	-	-	12
SLV2W	-	Two gang. Swing bracket mount for old work.	3¾	4	-	-	12
SLV3W	-	Three gang. Swing bracket mount for old work.	3¾	6	-	-	12
<b>LOW-VOLTAGE BRACKETS for class 2 low-voltage applications</b>							
P100WD	8.0	Single Gang. Gangable. Swing bracket for mounting, adjusts from 1¼" down to 1/8", for old work, stand alone applications.	3¾	2	-	-	15
P100ND	8.0	Single gang. With vertical side bracket for new construction, with wire retaining fingers.	3¾	2¾	1¼	-	15
PDV2B	22.5	Two gang. For dual-voltage. Face mount box and bracket for new construction.	3¾	4	3¾	11 No. 14 10 No. 12 9 No. 10	12
PLV1R	-	Single gang. Nail on for new construction.	3¾	2¼	-	-	12
PLV1S	-	Single gang. Screw on for new construction.	3¾	2¼	-	-	12
PLV1B	-	Single gang. Face mount bracket for new construction.	3¾	2¼	-	-	12
PLV2B	-	Two gang. Face mount bracket for new construction.	3¾	4	-	-	12
PLV1W	-	Single gang. Swing bracket mount for old work.	3¾	2¼	-	-	12
PLV2W	-	Two gang. Swing bracket mount for old work.	3¾	4	-	-	12
PLV3W	-	Three gang. Swing bracket mount for old work.	3¾	6	-	-	12
<b>DIVIDER PLATE</b>							
LVDIV1	-.5	Suitable for low-voltage or multiple 277V devices. For use with S235RAC, S235RACS, P235RAC, S235S50AC, S354RAC and S352W.	-	-	-	-	12

All boxes are UL listed.

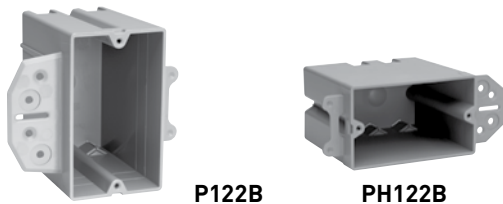
# SLATER® PLASTIC BOXES

## Wood & Steel Stud Bracket Boxes With Offset Bracket for Wood and/or Steel Mounting



CATALOG NUMBER	CU. IN. VOL.	DESCRIPTION	DIMENSIONS			WIRE FILL (AWG)	QTY. PER CARTON
			L	W	D		
<b>WOOD &amp; STEEL STUD BRACKET BOXES WITH QUICK/CLICK®</b>							
S118S50	18.0	Single gang. 3/8" offset for wood and steel stud mounting. 2 Quick/Entries® each end. For use with 3/8" to 5/8" wallboard.	3 3/4	2 1/4	2 23/32	9 No. 14 8 No. 12 7 No. 10	100
S118B50	18.0	Single gang. 1/2" offset for wood and steel stud mounting. Rear stabilizing bar virtually eliminates inward movement. 2 Quick/Entries® each end. For use with 3/8" to 5/8" wallboard.	3 3/4	2 1/4	2 3/4	9 No. 14 8 No. 12 7 No. 10	100
S235S50AC	35.0	Two gang. 3/8" offset for wood and steel stud mounting. 4 Auto/Clamps® each end. For use with 3/8" to 5/8" wallboard.	3 31/32	3 31/32	3 3/8	17 No. 14 15 No. 12 14 No. 10	50
S354S50AC	54.0	Three gang. 3/8" offset for wood and steel stud mounting. 6 Auto/Clamps® each end. For use with 3/8" to 5/8" wallboard.	3 3/4	5 25/32	3	27 No. 14 24 No. 12 21 No. 10	25
S468S50AC	68.0	Four gang. 3/8" offset for wood and steel stud mounting. Rear stabilizing bar virtually eliminates inward movement. 6 Auto/Clamps® each end. For use with 3/8" to 5/8" wallboard.	3 3/4	7 13/16	3	34 No. 14 30 No. 12 27 No. 10	25
<b>DEEP WOOD &amp; STEEL STUD BRACKET BOXES WITH QUICK/CLICK®</b>							
S122S50	22.5	Single gang deep. 3/8" offset for wood and steel stud mounting. 2 Quick/Entries® each end. For use with 3/8" to 5/8" wallboard.	3 3/4	2 1/4	3 3/8	11 No. 14 10 No. 12 9 No. 10	100

All boxes are UL Listed.  
UL Classified for 2 Hour Fire Resistance. (Does not apply to S468S50AC.)



P122B

PH122B

CATALOG NUMBER	CU. IN. VOL.	DESCRIPTION	DIMENSIONS			WIRE FILL (AWG)	QTY. PER CARTON
			L	W	D		
<b>STEEL STUD BRACKET BOXES WITH QUICK/CLICK®</b>							
S122B	22.0	Single gang. 1/2" offset for steel stud mount only. 2 stabilizer legs.	3 3/4	2 1/4	4 1/4	11 No. 14 10 No. 12 9 No. 10	100
SH122B	22.0	Single gang. Horizontal. 1/2" offset for wood or steel stud mount. 2 stabilizer legs.	3 3/4	2 1/4	3 3/8	11 No. 14 10 No. 12 9 No. 10	100
<b>STEEL STUD BRACKET BOXES</b>							
P122B	22.0	Single gang. 1/2" offset for steel stud mount only. 2 stabilizer legs.	3 3/4	2 1/4	4 1/4	11 No. 14 10 No. 12 9 No. 10	100
PH122B	22.0	Single gang. Horizontal. 1/2" offset for wood or steel stud mount. 2 stabilizer legs.	3 3/4	2 1/4	3 3/8	11 No. 14 10 No. 12 9 No. 10	100
S50BRACKET	N/A	Steel stud bracket only for use with P235RAC, P354RAC, S235RAC, S354RAC, S468RAC	N/A	N/A	N/A	N/A	50

All boxes are UL Listed. UL Classified for 2 Hour Fire Resistance.